



HAWTHORNE  
Fine Art

*Ever So Faithful: The Pre-Raphaelite Landscapes of Edward L. Custer (1837-1881)*

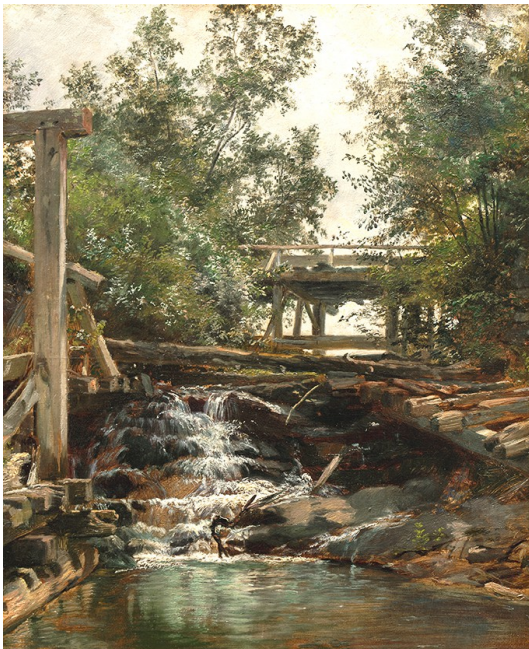
May 4 - 30, 2015



Edward L. Custer (1837-1881)  
*River Valley, New Hampshire*  
Oil on canvas  
12 x 15 1/8 inches  
Signed at lower left, inscribed with title on stretcher  
Hawthorne Fine Art



Edward L. Custer (1837-1881)  
*Burdock Plants Beside a Fence*  
Oil on board  
6 1/4 x 10 1/2 inches  
Signed at lower left  
Hawthorne Fine Art



Edward L. Custer (1837-1881)  
*Waterfall on Mill Brook, NH*  
Oil on canvas  
13 1/4 x 10 5/8 inches  
Signed and titled verso  
Hawthorne Fine Art



HAWTHORNE  
Fine Art



Edward L. Custer (1837-1881)  
*New England Coastal Landscape*  
Oil on canvas  
10  $\frac{3}{4}$  x 16  $\frac{1}{8}$  inches  
Signed at lower right  
Hawthorne Fine Art



Edward L. Custer (1837-1881)  
*Towards Mount Moosilauke, Lyme, NH*  
Oil on canvas  
9  $\frac{1}{8}$  x 15  $\frac{1}{8}$  inches  
Signed at lower left  
Hawthorne Fine Art



Edward L. Custer (1837-1881)  
*The Old Gate, Albano, Italy*  
Oil on canvas  
15  $\frac{1}{8}$  x 12  $\frac{1}{8}$  inches  
Signed at lower left  
Hawthorne Fine Art



Edward L. Custer (1837-1881)  
*Italian Villa with View Toward Albano*  
Oil on canvas mounted to board  
6  $\frac{3}{8}$  x 15  $\frac{1}{2}$  inches  
Signed at lower right  
Hawthorne Fine Art



HAWTHORNE  
Fine Art



Edward L. Custer (1837-1881)  
*Waterfall and Fisherman*, 1861  
Oil on canvas  
12 1/8 x 10 1/8 inches  
Signed & dated 1861 at lower center  
Hawthorne Fine Art



Edward L. Custer (1837-1881)  
*Castrum Pfronten, after W. H. Bartlett*, 1858  
Oil on canvas  
12 1/8 x 16 1/8 inches  
Signed at lower left  
Hawthorne Fine Art



Edward L. Custer (1837-1881)  
*Kindli on Lake Lucerne*  
Oil on canvas  
12 1/8 x 21 inches  
Signed lower right  
Hawthorne Fine Art